



## Installing and Executing your SkyMate Application on Windows<sup>®</sup> 8

The SkyMate software can be installed and run without restriction on any Windows<sup>®</sup> 8 release with the DEP (Data Execution Prevention) feature disabled. You must also use a Windows<sup>®</sup> 8 certified and SkyMate approved USB-to-Serial adapter and driver.


### Preparation

If you don't have the latest copy of the SkyMate application, then download the current application from [www.skymate.com](http://www.skymate.com).

### Disabling DEP (Data Execution Prevention) and installing SkyMate in Windows<sup>®</sup> 8

The following section contains the steps to disable DEP. Please make sure that you follow these steps carefully. For added protection, please back-up your sensitive data.

In many Windows 8 computers the BCDedit command cannot be completed until "Secure Boot Policy" is disabled in BIOS. If the steps below do not work for your Windows<sup>®</sup> 8 installation, please contact your computer manufacturer for particular instructions about globally disabling DEP and disabling "Secure Boot Policy" in BIOS.

1. Log on to Windows<sup>®</sup> 8 with a user account with **administrator rights**.
2. Windows logo key +Q to open the Search charm (search apps) and type "cmd". Right click on the "**Command Prompt**" icon and select "**Run as administrator**" (see Figure 1 for Windows 8 and Figure 2 for Windows 8.1).
3. You will probably have to acknowledge a UAC (User Account Control) prompt window to get it done. Click on "**Yes**" (see Figure 3).
4. Once you are at the command prompt, type the following:  
"bcdedit.exe /set {current} nx AlwaysOff" and press "**enter**". Please pay careful attention to the spaces in the command string. When completed the message "**The operation completed successfully**" will appear (see Figure 4).
5. **Re-start your computer**. Insert the SkyMate CD or double click the downloaded SkyMate application. The installation program will start and Windows<sup>®</sup> 8 (UAC) will then ask for authorization to run the installer. Click on "**Yes**" (see Figure 5) and the SkyMate installation program will launch.
6. The SkyMate application will be added to the list of trusted software and the next time it is loaded, Windows<sup>®</sup> 8 will not ask for confirmation.
7. Select "**Run the program without getting help**" when the "Program Compatibility Assistant" prompt window pops up (see Figure 6).

PLEASE NOTE: If you want to turn the DEP feature back on, use the same procedure to get to an elevated command prompt, and then type:

1. "bcdedit.exe /set {current} nx AlwaysOn"

Windows<sup>®</sup> 8 is either a registered trademark or a trademark of Microsoft Corporation in the United States and/or other countries.

Figure 1.

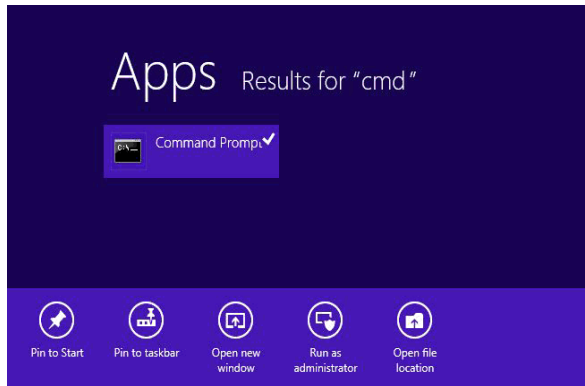


Figure 2.

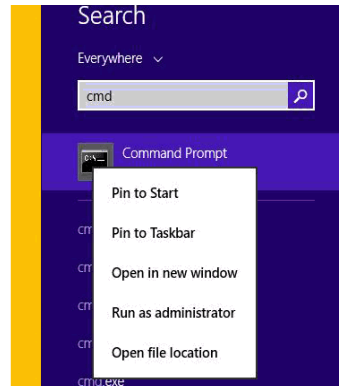


Figure 3.



Figure 4.

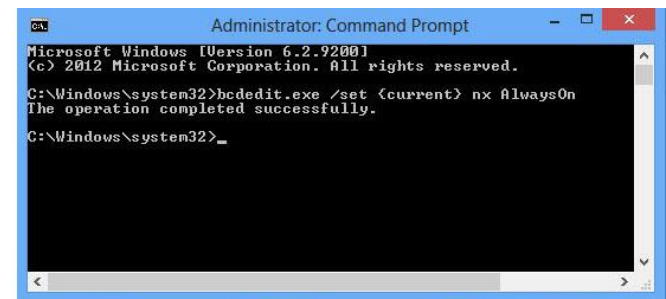


Figure 5.

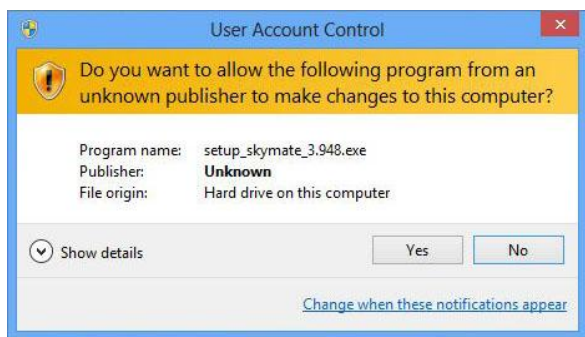


Figure 6.

