

Sea Surface Temperature

Quick Start Guide



Welcome to the world of high resolution SST delivered to your Vessel! Below are the basic steps for getting started... the software for this download can be found at www.skymate.com.

INSTALL and START-UP

SkyMate's SST will work with any active SkyMate system, although some functionality requires the integrated GPS capabilities of the SkyMate 200 or SkyMate VMS models. The SST service requires SkyMate client application version 3.9 or later.

To install the new SkyMate software:

- a. If running, close the old SkyMate application
- b. Insert the new SkyMate CD into the CD drive.
- c. The installer will detect the old version and install the new version.
- d. When prompted for *SkyMate 3.9 Setup*, click "ok".
- e. When prompted for *SkyMate 3.9 Setup: License Agreement*, read carefully and if you agree click "I agree".
- f. If you had a previous version of the SkyMate client software installed the install wizard will provide another prompt telling you that there are some files in the SkyMate directory (typically C:/program files/skymate). You will need to click "ok" to continue the installation.
- g. When prompted for *SkyMate 3.9 Setup: Installation Folder*, click "Install" to install in the default folder.
- h. Once the install wizard has completed the new software install it will prompt you to close, click on "close" to complete the installation.
- i. If prompted by *SkyMate 3.9 Setup* to reboot, click "yes".

To start the new application, click on the SkyMate desktop icon.

Note that for the new application, if you are a Northeast VMS customer, the VMS button will not show initially. Click on the "System" button then choose "Setup" from the top bar options and set your VMS region. Whether or not this selection is made, your communicator will continue to send Position Reports.

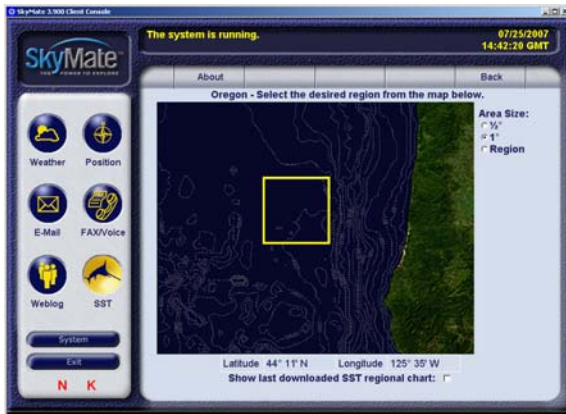
This release is not backward compatible due to the introduction of some additional security features designed to enhance confidentiality and data integrity. All your messages will be migrated automatically to the new internal environment. Once the migration is completed you will not be able to go back and re-install any SkyMate client software release older than SkyMate 3.9.

USING THE SST SERVICE

- From the SkyMate main menu, click on the **SST** icon on the left hand side of the screen. This will bring you to the SST main menu.

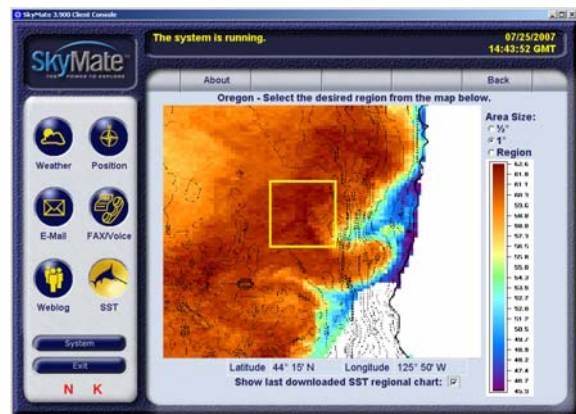
SELECTING AND DOWNLOADING A NEW SST CHART

- Choose **SST** from the top banner on your screen. From the map of North America, select the region in which you are fishing by clicking on the appropriate box.
- Once in your region, use your mouse to grab the yellow selection box and place it in the area you plan to fish. Double click on the box, and the system will capture the longitude and latitude at the center of the selected area.



- Once you've selected your region, you have a number of options:
 - You can request an SST image over an area of ½ degree, 1 degree or the whole region

- Alternatively, by checking the box at the bottom of your screen, you may choose to make the area selection using the last Regional SST Chart that you have already downloaded.





- Accept these coordinates, or type in the coordinates that you desire for the center point of your fishing area.
- Choose to request the most **Current** chart right away, or **Schedule** delivery of the most current chart at a specified time in the future, or have any new charts sent automatically over a specified time with the **Auto-update** function.
- In the requesting form page you'll notice an option for maximum cloud cover. Images with cloud cover more than the value you have chosen will not be delivered.

When finished with your selections, hit the **Send** button on the top banner of your screen.

VIEWING YOUR SST CHARTS

- From the SST Service main menu, select the **Inbox** function from the top banner on your screen.
- The SST inbox will display all recently received SST charts, showing the location (Lat, Long) and the time that the SST was taken. Click on the chart you wish to view.
- Your SST chart is now on your screen. Note the Date, Time, Lat, Long and size (in bytes) of the chart, as well as the temperature scale alongside the chart.

